

Misawa International Association News

Survival Japanese

March 1, 8, 15 and 22 Fridays
10 am - Noon
Fee: ¥1,500, Free child care available
Japanese Cooking Class will be held on
March 1 from 10 am.



Hina Matsuri Potluck Party

March 6, Wednesday at 10:30
Fee: ¥150

Celebrate Girls' Day (Hina Matsuri) by
joining us for potluck!
Bring your favorite dish!



Japanese Intermediate Class

March 5 and 12, Tuesdays
from 6 pm - 7 pm
Fee: ¥500 for MIA member



International Friendship Group

Every Wednesday,
starting at 7 pm



All the events will be held
at the Misawa International Center!!!



New Class will be held on April

Please check next issue of Misawa City
News or Misawa City Office Website!
<http://www.city.misawa.lg.jp/index.cfm/9,5870,86.html>



For more information please contact at
Misawa International Association
Phone: (0176) 51-1349
Email: kokusai@city.misawa.lg.jp



Misawa International Center

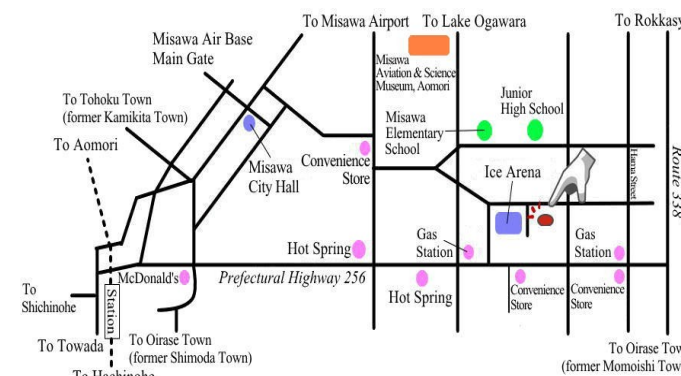
TEL:0176-51-1255 FAX:0176-51-1211 Email: kokusai@city.misawa.lg.jp
Address: 230-1 Aza-Sonosawa, Oaza-Misawa, Misawa City 033-0022

The Misawa City Community Bus "Mi-Bus" English Map is Available Now!

This map show only the ¥100-zone fare areas. We hope this map will
help you get around Misawa! Pick up copy at any of the locations below:

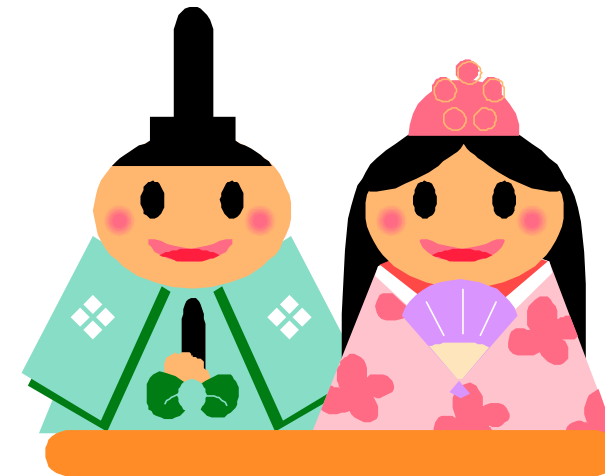
- Sky Plaza Misawa
- Misawa International Center
- Airmen and Family Readiness Center
- Citizens Affairs Division of the Misawa City Office
(on the 1st floor)

Misawa City International Relations publishes the monthly
free paper, "Misawa City News". We keep you informed of
what is happening in Misawa. We appreciate your feedback!



Misawa City News

March, 2013 No. 97



What's So Special About March?

雛祭り Hina Matsuri

3 March is known as the Doll Festival or Girl's Day. It is a day to celebrate girls. Families who have a young daughter display a set of beautiful Hina dolls and eat traditional foods such as "Chirashi sushi" and Clam Soup, to ensure their daughter's good health and happiness. This custom is believed to have started during the Heian period (about 1,000 years ago). Let's celebrate the Doll Festival with sing a Hinamatsuri song, eat sushi and cake that was decollated for special day!



ホワイトデー White Day on 14 March



After Valentine's Day is over, you see many candies or gifts in the store of a white or spring theme. In Japan, only women give chocolate to men on Valentine's Day. Then on White Day, men return the favor and give the women chocolate. White Day gifts include cookies, flowers, marshmallows, or ever jewelry. There was the rule called "Sanbai-gaeshi" before, which translates as "3 times return". This phrase means that White Day gifts should be worth three times or more than the received Valentine's gift.

年度末 End of Year

March is the end of the fiscal and academic years in Japan. For both businesses and schools, the year is from 1 April to 31 March of the following year. Many graduation ceremonies and farewell parties are held at schools or companies during this time. Also, most companies become extremely busy getting their accounts and affairs in order. One result is that construction companies become busy with roadwork projects, so that they spend all the money in their budgets. Another effect is that many companies will move employees to new locations. On the plus side, expect to find good deals on furniture and toys at your local thrift shop (リサイクルショップ) in April.



The 14th Annual Misawa Children's Ice Festival



**9 March, Saturday
at Misawa Ice Arena**

PROGRAM

8:30 - 9:10 Reception and Sign-In
9:15 - 9:25 Welcoming Remarks
9:30 - 9:35 Warm-up Exercise
9:40 - 10:10 Bowling on the Ice
10:15 - 10:50 Dribble & Shot
10:55 - 11:20 Sled Race
11:25 - 11:45 Tug of War
11:50 - 12:20 Closing Remarks

This free event is open to all children, aged 4 - 12 years old and their parents. There will be many activities for entire family, including: Tug of War, Ice Bowling on the Ice and more! Please bring your own gloves, winter boots, warm clothes, and some cash (yen) for the food and drink vending machines.

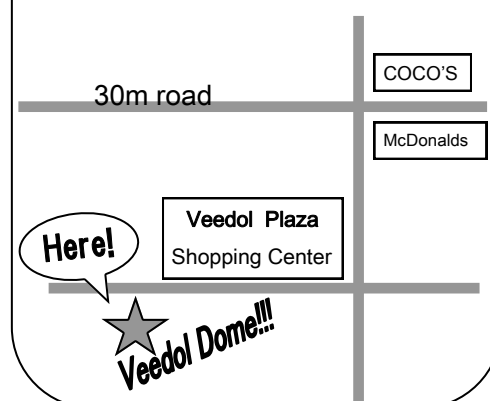
For more information: Contact Misawa City Office (51-1255) or at the Airman Family Readiness Center(226-4735).
日本人側申込み: 三沢市教育委員会 市民スポーツ課
2月28日までに封書またはFAXにて申し込んでください。
電話:53-5111(内線372・373) FAX:52-3963

The 7th Manpuku Matsuri 麦面

March 24, 2013, Sunday 10:00 a.m. - 3:00 p.m. at Veedol Dome
Which is located next to Veedol Plaza
(a shopping center not far from McDonald's)

Manpuku means "a full stomach" and Matsuri means "festival" in Japanese. The theme for this Manpuku Matsuri is 麺--Noodle; This includes: うどん--Udon (wheat noodle)、ラーメン--Ramen (Chinese egg noodle)、そば--soba (buckwheat noodle) and more! This festival will showcase some of the specialty noodle dishes of Misawa at Veedol Dome. Come try some of the yummiest noodles!!!

Location map



Special Exhibit "Cardboard Box Park!"
From March 20, Wednesday to April 7, Sunday
at the Misawa Aviation & Science Museum
between 9:30 am - 4:30 pm



This is special exhibit of "Cardboard Boxes Park" was created to show you how earth friendly material such as cardboard boxes can be reborn as a playground and play toys. Come and enjoy in the Special Exhibition Room. Fee: FREE!
The museum is open 9:00-17:00 and closed on Mondays.
* If a Japanese holiday falls on a Monday, then the museum will be open on that Monday but will be closed the following day (Tuesday).
Admission: Adult ¥500; High School Student ¥300; Free for 15 years old and under. For more information, check out their website at <http://www.kokukagaku.jp/english.html>

**The 26th Annual
JAPAN DAY 2013**

6 April 2012, Saturday
From 10:00 a.m. to 2:00 p.m.
at the Collocated Club
(on Misawa Air Base)
Experience Japanese culture!

2 years Later...

Do you remember March 11, 2011?

It has been almost 2 years since the disaster. The Great East Japan Earthquake occurred near the northeast coast of Japan.

The earthquake had a magnitude of 9.0 and triggered a powerful tsunami. The prefecture coasts of Miyagi, Iwate, and as far north as the Hachinohe and Misawa Cities of Aomori were devastated.

Over 15,000 lives were lost and 3,000 people were declared missing. After the disaster, Japan received relief from many countries, as well as from the nearby joint US-JASDF Misawa Air Base. The local communities deeply appreciate the volunteer efforts of the US service members and their dependents.

We are still truly appreciative of all the countries who gave encouraging support and continuous assistance.



Ms. Veedol at the Sabishiro beech was restored.

Intercultural Exchange Message Board



Come see our new message board!

Located in Misawa International Center Lobby, near the International Exchange Lounge (if you're standing in the entrance way, the board is off to the left). This is message board is for you!

Please post courteous messages or announcements of an intercultural nature such as English lessons, play dates, advice and more. We look forward to hearing from you!

Easter Egg Hunt at KinderJam

March 16, Saturday at 11:00 am
at Fun & Learning Center in Sky Plaza Misawa,
on the 3rd Floor
Fees: \$5 or ¥500
What to bring: Indoor Shoes



Kinder Jam Instructor, Ms. Margaret will provide fun activities for 30 minutes, to young children, up to preschool age. KinderJam is a fun, exciting, and high-energy "Music and Movement" program that emphasizes kinesthetic and tactile learning of pre-academic skills and concepts while promoting positive parent engagement. Join in and enjoy Easter Egg Hunt!!!

For more information,
please contact at Misawa Access Publications
at TEL: 080-1692-9960 or Email: npo.map@gmail.com

Let's Enjoy Tai chi!

March 16 and 23, Saturday from 10:00-11:30 a.m.
At the Martial Art Stadium
in the Misawa Civic General Gymnasium

While "tai chi" is a Chinese martial art, it is also a low-impact exercise. Tai chi can improve one's energy and blood flow and enhance internal functions, which in turn, can heal one's mind and body. Tai chi has also been known to relieve back pain and stress as well increase one's concentration. Why don't you give it a try?



Instructor: Ms. Setsuko Nakanishi,
An Japan Wushu Taijiquan Federation Official Instructor
Things to bring: inside shoes, drink, and bath towel
Application: Limited to the first 25 participants, Fee is free!
★Please sign up with the Misawa International Association before March 15, Friday. (Located in the Misawa International Center)

Please call 51-1255 for more information.