

## Misawa International Association News

TEL (0176) 51-1349

Email : info-mia@misawasi.com

### International Play Group Potluck Party

June 6 2012, Wednesday at 10:30-11:30 a.m.

MIA member ¥100, non member ¥150

Please bring your a favorite dish and join us!!!

### Japanese Language Class (for MIA members only)

Every Tuesday: 1:00 p.m. - 2:00 p.m. ¥500 per class

### Kids English (for MIA members children)

June 4,11, 18, 25, Monday 4:00 p.m. - 4:45 p.m. ¥500/per class visit

June 8,15,22,29, Friday 4:00 p.m. - 4:45 p.m. ¥500/per class visit

There is a discount for siblings!

### ABC Circle : June 13, 20, 27 Wednesday 10:30 a.m. - 11:30 a.m.

Fee: MIA member ¥500, non-member ¥800

### English grammar class: June 8, 22, Friday 10:00 a.m. - 12:00 p.m.

Fee: MIA member ¥500, non-member ¥800

All events held  
at the Misawa  
International Center!



## Misawa International Center

TEL:0176-51-1255 FAX:0176-51-1211 Email:[kokusai@city.misawa.lg.jp](mailto:kokusai@city.misawa.lg.jp)

Address: 230-1 Aza-Sonosawa, Oaza-Misawa, Misawa City 033-0022

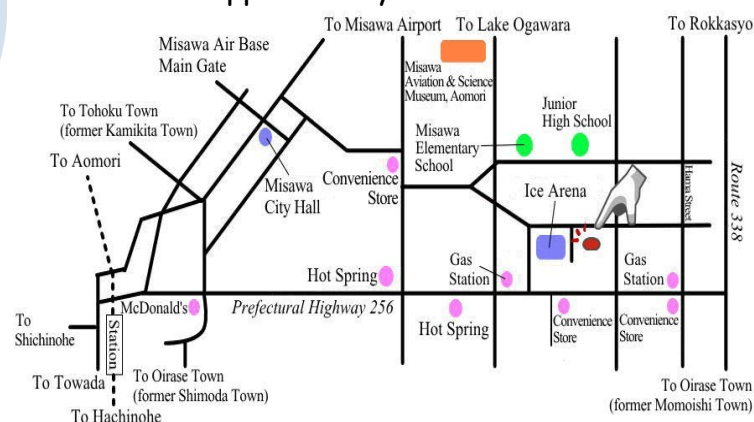
Thank you for reading MISAWA CITY NEWS!

**"Mi-Bus"**  
**English Map is available now!**

We hope this map will be useful in getting around Misawa! Please pick up a copy at Sky Plaza Misawa, Misawa International Center, Misawa City Hall and the Airman and Family Readiness Center.

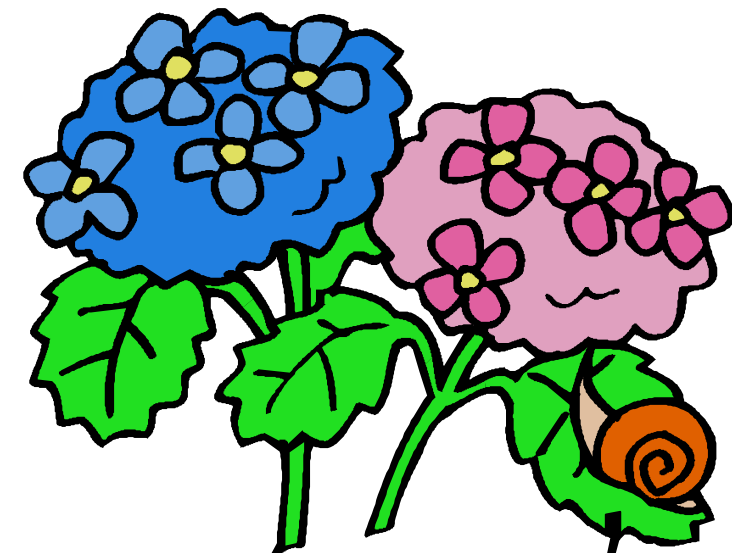


Misawa City International Relations publishes the monthly free paper, "Misawa City News". We keep you informed of what is happening in Misawa. We are also working on adding an "English Version" to the Misawa City web-sites. We appreciate your feedback!



# Misawa City News No. 88

## June 2012



# Happy Father's Day!

お父さんありがとう!

The 3rd Sunday of June is Father's Day. After Mother's Day was created in 1908, Ms. Sonora Smart Dodd felt a similar holiday should be held for fathers. At the time, her father, William Jackson Smart was a single parent, who was raising his 6 children.

Because Ms. Dodd's father was born on June 5, she chose to organize the first Father's Day for June 1910. The day was first observed in her church in Spokane, WA. But it would be another 60 years before Father's Day became an official holiday, with President Nixon's signing it into national law in 1972.

In Japan, Father's Day is an unofficial holiday, which was first observed here in the 1950. This year, Father's Day is June 17. Let's remember Dad and show our appreciation for all their work in being a great father.

Make your own original celebration for your special dad!!!



# American Day 2012

The 24th Annual American day was held on June 3, Sunday by the 35th Fighter Wing and the Misawa International Club. The event was started with a Fun Run at 9:00 a.m. and the fun kicked off with a parade starts at 9:45. The parade began at the Hirose Gas Station and ended at the Misawa Civic Center. It featured the US Honor guard, Harleys Group, Classic Cars, Misawa Commercial High School Marching Band, Taiko Drummers, Cheer leaders, the MAB ambulance as well as other group.

About 80,000 people from Misawa and the surrounding communities attended the festival to enjoy American foods, culture and live music. Thank you for all of your support!!



## Misawa Aviation & Science Museum June 2012 Schedule

### “Dinosaur vs. Mammal”

This is a Japanese-language special film, to complement the upcoming special exhibit, “Dinosaurs”.

When : Every Saturday and Sunday

Time : 11:00 a.m. : “Welcome to the World, Dinosaur vs. Mammal”

1:30 p.m. : Prequel

3:00 p.m. : Sequel

### “Zero Fighter Replica Exhibit”

This replica was actually used in the 1968 Japanese Film, “ Rengo Kantai Shirei cho-kan: Yamamoto Isoroku”, starring the great Japanese actor, Toshiro Mifune, as Japan Naval Marshal General and Commander-in-Chief of the Combined Fleet.

Marshal General Yamamoto was the commander-in-chief during the decisive early years of World War II in the Pacific Theatre. When he was a young man, Yamamoto studied at Harvard University and served as a naval attache in Washington, D.C. While there, he learned to speak English fluently. Yamamoto was widely suspected in many circles, including the US.

When : Now until June 24, Sunday

Time : 9:00 a.m. - 5:00 p.m.

Place : in the Hanger of the Museum

#### Admission fee

¥700 : Adult

¥500 : High School Student

¥100 : Elementary school Student

Free : 0-6 years old

## Misawa-Wenatchee Valley Sister City Delegation

This year marks the 31th anniversary of the contract of Sister City relationship between Misawa City and Wenatchee City, and the 11th anniversary with East Wenatchee City.



11 Junior High School students delegates had visited Wenatchee City, East Wenatchee City and Seattle Washington States from May 3 - 12. The students delegates enjoyed having firsthand experience of American daily life and different culture through home-stay, school visits, Apple Blossom Parade, Classy Chassis Parade & Car show and many other activities.

Last May 30, during a debrief meeting, the students delegates shared their experience. “Panoramic view”, “Big hamburger”, “Large garden”, they were able to feel different between Japan and U.S.

“Respect for others knows no boundaries”, said one of the student delegates. Mr. Kazumasa Taneichi, the Mayor of Misawa City, believes this international exchange trip has been a valuable experience for our

young people, by developing their well-being as well as expanding their horizons.



On October 4 of 1931, Miss Veedol with American aviators aboard challenging the world’s first non-stop trans-Pacific flight, succeed in her heroic attempt ended starting from Sabishiro Beach in Misawa Village which is now Misawa City. That became a glorious achievement in the history of world aviation. In 1981, as the year marked the 50<sup>th</sup> Anniversary of Miss Veedol’s achievement, the City of Misawa deemed it meaningful to establish a bond of friendship with the City of Wenatchee to promote an everlasting peace between the two nations.

Based on the Mayors’ agreement, Misawa welcomed the Wenatchee delegation of sixteen headed by Mr. Hubert C. Blonk , the Chairperson of the Wenatchee Sister City Association, and the signing ceremony for Sister City Relationship was held at Misawa Civic Center on October 4 of that same year.

In 2000, Wenatchee’s own Sister City organization “Wenatchee-Misawa Sister City Association” was expanded to “Wenatchee Valley-Misawa Sister City Association”. In the same year, when the Mayor of East Wenatchee visited Misawa, the Mayor of Misawa mentioned “Being the take off point Miss Veedol, Misawa would like to start Sister City relationship with East Wenatchee as well because of its long-term history of exchanges with Misawa.” The Mayor of East Wenatchee accepted the idea, and in 2001, the initial treaty of Sister City Relationship was held in East Wenatchee in May, and the signing ceremony at Miss Veedol Dome in August commemorating the 70<sup>th</sup> Anniversary of the non-stop trans-Pacific flight.

