

# Misawa International Association News

Phone: 080-6022-1349 Email: [kokusai@city.misawa.lg.jp](mailto:kokusai@city.misawa.lg.jp)

All the classes and events will be held at Misawa International Center.  
For more information, please contact Misawa International Association.

Sign Up  
NOW

## ABC Circle

Every Wednesday,  
10:30 am - 11:30 am

¥500 / circle for MIA member  
¥800 / circle for Non-MIA member

Join our cross-cultural exchange circle.  
Make new friends as you learn some  
Japanese as well as teach some English.

## Survival Japanese

Oct 6, 20, 27, Nov 10, 17  
Mondays, 10:00 am - noon

¥2,000 for 5 classes

Free childcare available  
(Required sign up)



## Japanese Cooking Class

Oct 6 & Nov 10, Mondays  
10:00 am - noon ¥500 / class

Want to learn how to cook curry-  
rice? Do you want to try Misawa's  
Local Specialties?  
Sign up and bring your Apron !!

Sign up is required



## Cooking Class

**Korean dishes**  
Nov 5, Wed  
10:30 am - 12:30 pm

**Holiday dishes**  
Nov 19, Wed  
10:30 am - 12:30 pm

¥1,000 per class

Sign up is required



## Japanese Intermediate Class

Oct 14, 21, 28,  
Nov 4, 11, 18, 25  
Tuesdays,  
6:00 pm - 8:00 pm

¥2,500 for 7 classes



# Misawa International Center

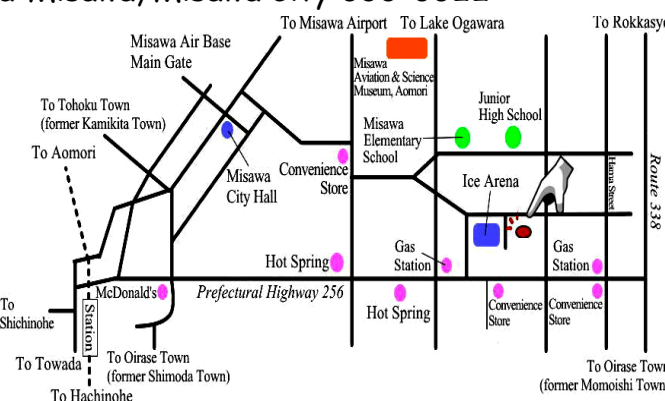
TEL:0176-51-1255 FAX:0176-51-1211 Email: [kokusai@city.misawa.lg.jp](mailto:kokusai@city.misawa.lg.jp)  
Address: 230-1 Aza-Sonosawa, Oaza-Misawa, Misawa City 033-0022

## Thank you for reading!!

Misawa City International Relations publishes the monthly free paper,  
"Misawa City News". We keep you informed of what is happening in  
Misawa.

## Subscribe Now!!

Want to stay up to date with what's going on in Misawa City? Get a  
FREE email subscription to Misawa City News! Please send your  
name and email address to: [kokusai@city.misawa.lg.jp](mailto:kokusai@city.misawa.lg.jp)



## Intercultural Exchange Message Board

Come and see our message board! Located in Misawa International Center Hall,  
near the International Exchange Lounge (if you're standing in the entrance way,  
the board is off to the left). This message board is for you!  
Please post courteous messages or announcements for an intercultural  
exchange purpose such as English lessons, play dates for kids, advice in Japanese  
life and more. We look forward to your messages!



# みさわしていにゅーす

No.116

## Misawa City News

October, 2014

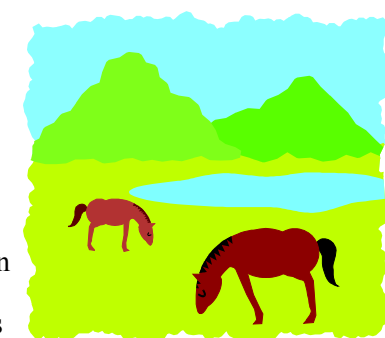
## 天高く馬肥ゆる秋

Autumn with the sky clear and blue, and horses growing stout.

"Ten taka-ku Uma Ko-yuru Aki" This is an old Chinese proverb and we use it as ex-  
presses Japanese Autumn. During summer, high-pressure system over the Pacific  
Ocean covers Japan and it cause very humid air which makes the sky looks blighter. On  
the other hand, high-pressure system approaches Japan from the continent during Au-  
tumn and it cause dry air which makes the sky clear and blue. This is the season changes  
from Summer to Autumn according to the type of pressure system.

Let's move to next "horses growing stout" part. Autumn is known as the season for good appetite, harvest, reading  
and the arts. After sunny and hot summer, comfortable season arrive with good harvest. We can enjoy various fresh  
fruits, fish, rice and more. You will not only see young horses growing, but young adults too!!

Simply, this old proverb indicates autumn is a great season because the sky is clear and blue and we have more appe-  
tite. Here are most popular foods to represent autumn below.



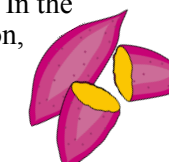
### Matustake まつたけ: Mushroom

Matsutake is the king of mush-  
room and it grows bottom of Red  
Pine tree. It features rich aroma  
flavor and  
crunchy texture  
when it roasted.  
It's good for  
soup, roast and  
cook with rice.



### Satsumaimo さつまいも: Sweet potatoes

When it comes to Satsumaimo, it is 焼き  
いも Yaki-imo. Its a grilled a bonfire or  
baked over hot stones. The fluffy texture  
and naturally sweet taste are loved by  
the Japanese for a long time. In the  
autumn through winter season,  
food truck drive to different  
communities and sells fresh  
baked sweet potato.



### Kaki 柿: Persimmon

In autumn, you see squarish  
shaped, yellow-orange to dark red-  
orange fruits in gardens every-  
where. It's called persimmon, the  
taste is very sweet, edible fruit and  
texture is crunchy  
when you eat it  
freshly. It also pop-  
ular make it dry.



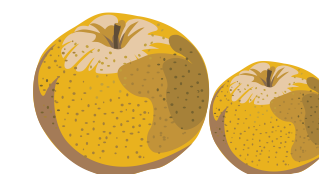
### Sanma サンマ: Pacific saury

Sanma is one of the popular fish  
that represent autumn.  
The seasonal saury has a lot of fat  
which makes full flavor and best  
taste. And it contain a good sauce  
of EPA, DHA and vitamins.



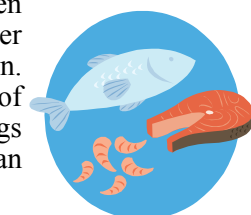
### Nashi なし: Pear

Nashi is another popular fruits  
of autumn. It look like a yellow  
apple, it has a texture similar to an  
apple and its taste is sweet and  
juicy.



### Aki-aji 秋鮭: Autumn Salmon

Salmon is a migrant fish, it born in the  
river and grows in the Northern Pacific  
Ocean for few years, then  
it return to the river  
where it were born.  
Autumn salmon has lot of  
fat and female lay eggs  
which taste better than  
others.



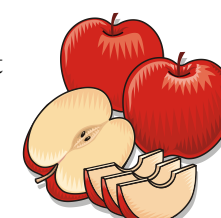
### Shin-mai 新米: Newly harvested rice

As know as rice is a staple food  
in Japan and it harvested between  
September to October throughout  
Japan.  
Nothing beats  
the taste of new  
crop rice.



### Ringo りんご: Apples

Aomori prefecture is Japan's  
top apple producer and about 50  
kinds of Apple are produced now.  
Tsugaru, Fuji, Mutsu are widely  
known and  
their taste is  
not only sweet  
but juicy.



There is much to do in this part of Ja-  
pan: pick apples, harvest rice, catch a  
salmon, listen to a concert, enjoying  
painting and fall foliage tour!  
Before ending the day, spent time at  
local onsen or public spa is the best way  
to relax. Here are some suggestions of  
what to do around Misawa.  
Hurry and enjoy, before winter comes!





# MISAWA HALLOWEEN FESTIVAL

This year's Halloween Festival will be held on Oct 18, Saturday, downtown Misawa-- Main Street, American Park, and American Village. There will be a costume contest, trick-or-treating, and other fun events such as a prize drawing and sale booths around American Village. Come along with your family friends, to this unique Japanese Halloween event! Enjoy a ghoulish day out!

## US-Japan Costume Parade & Contest

11:30 am - 12:30pm : Sign up at Orange Hiroba

This plaza [brick-laid park] is on Main Street (also called "White Pole Road"), one block east from Max Value Supermarket.

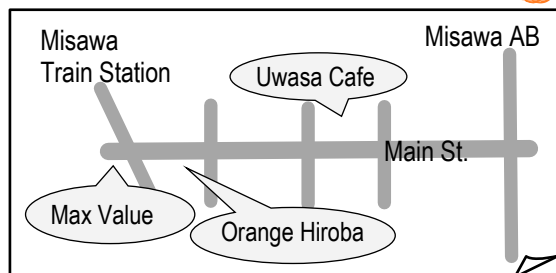
12:30 - 13:30 Costume Parade down Main Street, from Orange Hiroba to Sky Plaza

13:00 - 14:30 Contest & Judging

14:40 Awards Ceremony

## Trick-or-Treating on Main Street: 3 pm start

Come and trick-or-treat on Main Street! Stop at the shops decorated with pumpkins, to collect your Halloween treats!



## The 16th Manpuku Festival & Fire Safety Fiesta 2014

Oct 26, Sun, 11 am - 4 pm at Miss Veedol Dome

Manpuku means "a full stomach" in Japanese. These events are definitely a treat for your tummy! This festival will feature the Misawa's local specialties such as Nagaimo (yam), Gobo (Root burdock) and Hokki-gai (Pacific surf clam). Come and try tasty foods during this festival.



The fire safety fiesta 2014 will be held at the same time. So what do firefighters do? Believe it or not, they do more than just put out fires! Come and see what the fire department does! There will be various fire equipment and emergency vehicles on display as well as for hands-on experience.



Both festivals will be held at Miss Veedol Dome that next to the Misawa Shopping Center, near McDonald's.

## Misawa Cultural Festival 2014

November 3 is a national holiday in Japan. It's called Culture Day and its purpose is promoting culture such as tea ceremony, flower arrangement, traditional dancing and arts. You will see many cultural events during November including Misawa City. See next the program for more details! All events will be held at the Misawa Civic Center and admission is free.

Date	Time	Event
Oct 31, Nov 1, 2, Fri - Sun	10:00 am - 5:00 pm	Art Exhibits and performance (tea ceremony on Nov 2 only).
Nov 1, Sat	1:20 pm	Ballet Exhibition
Nov 2, Sat	12:00 pm	Dance Exhibition
Nov 8, Sat	12 noon	Traditional Japanese Music Concert
Nov 9, Sun	11:00 am	Traditional Japanese Dance Show
Nov 15, Sat	1:30 pm	"Do Re Mi" Ensemble Music Concert
Nov 16, Sat	1:30 pm	Brass Band Concerto
Nov 22, Sat	2:00 am	Misawa City Chorus Concert
Nov 23, Sun	11:00 am	Dance Exhibition
	6:30 pm	Jazz & J-Pop Music Concert
Nov 24, Mon	12 noon	Variety Entertainment Show

## Let's Speak in Nanbu! Part 10

Believe it or not, even though Japan is a small country, it has a variety of colorful accents and dialects. Not far from Misawa-- the area from southern Aomori to northern Iwate Prefecture--one of the main dialects is Nanbu-ben (ben 弁 means "dialect; speech-type"). Here are some useful expressions!

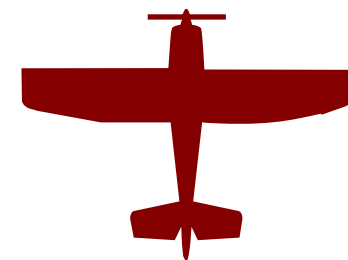


わど あんべ Wa-do an-be!  
Let's go together!

わど wa-do: with me  
あんべ an-be: go



# Misawa Aviation & Science Museum Event Schedule



## Science Show - Yura yura huwa huwa balance!

How do you find a balance? Come and find out in our science lab!

The show is free but participants still need to pay for the museum entrance fee.

You don't need to sign up ahead of time but just show up at the lab following the schedule.

Weekdays: (1) 11:00 am (2) 12:30 pm (3) 3:30 pm

Weekends, Holiday: (1) 12:30 pm (2) 3:30 pm

## Propeller Car: Oct 1 - 31 (Sat, Sun, Holiday) at Museum Lab

Making rubber powered propeller car. This event is weekend and holiday special for the first come first served basis limitedly up to 20 people. Fee is only ¥250 per person including materials. Please sign up at least 30 minutes prior to the schedules below. (1) 11:00 - 11:30 am (2) 2:30 - 3:00 pm.

## Halloween Candle & Garland: Oct 18 - 19 (Sat-Sun) 9:30 am - 4:00 pm at Museum front of Plane "YS-11"

Making jack-o-lantern candle and garland. Sign up is not needed but its first come first served basis. ¥300 for material.

## Halloween Party in Museum: Oct 26 (Sun), 10:00 am - 3:00 pm at Entrance area and museum area

Everyone is invited! Dress up and come to trick-or-treat at Museum! There will be many activities such as Quiz, Ga-ra-pon (Japanese lottery ball wheel), and more. Fee is FREE!!!

## How to Become a Helicopter Pilot : Oct 12 (Sun), from 1:30 pm at the Multimedia AV Hall

HEMS (Helicopter Emergency Medical Service) helicopter pilot will be on hand to give first-hand account lectures on the training and the secret of being helicopter pilots. HEMS equipment will be display.

## General Information: Misawa Aviation & Science Museum is open 9:00 am - 5:00 pm, every day except Mondays.

If a Japanese holiday falls on a Monday, then the museum will be open on that Monday but will be closed the following day. Admission: Adult ¥500; High School Student ¥300; Free for 15 years old and under. For more information, check out their website at <http://www.kokukagaku.jp/english.html>

# And Not Far from Misawa City...

## Autumn Rose Festival

Wed 1 - Mon 13, Oct, 9 am - 3 pm  
At Higashi Hakkoda Rose Country  
(Next the Shichinohe municipal ski area in Shichinohe town)  
GPS coordinate:  
N40.696260, E141.100205

Make a rose soaps on Sun, 5.  
And there will be also selling rose, picking rose and original pizza selling for small fee during the period. Enjoy the beautiful roses!

## Towada Koma Fiesta

Sat 18 - Sun 19, Oct  
at Towada Cntral Park  
GPS coordinate:  
N40.610587, E141.206818

This festival related to horse as Towada-City used to be army horse branch. Festival features horseback archery, jumping competition and riding horse. Good for both children and adults!

## Maple Town Fiesta

Sat 1 & Sun 2, Nov  
At Rokunohe Sports Gymnasium of Rokunohe Town  
GPS coordinate:  
N40.608900, E141.327670

Maple marathon, Shamo-rock (local chicken breed in Rokunohe) pot dish for 1000 people, Hero show, Live music band performance and many stage events!

## Rokkasho Industrial Fiesta

Sat 1, Nov, from 9am  
Sun 2, Nov, from 9:30 am  
at Rokkasho Fishery Port  
GPS coordinate:  
N40.968224, E141.385912

Many event includes catching salmon, BBQ, local specialties market, live performance will be features!!! Numbering ticket will be distributed for catching salmon.

## Shichinohe Autumn Fiesta 2014

Sat 25, Sun 26 Oct, 10 am - 3 pm  
At Shichinohe Gymnasium  
GPS coordinate:  
N40.711571, E141.153906

Do you like Soba -- buckwheat noodle? Come and try their soba noodle and taste different !!

## Misawa City Fukushi Fair 2014

Sat 18, Oct  
at Misawa International Center  
GPS coordinate:  
N40.679926, E141.402110

This festival will be hosted by people with special needs and their supporter. It features selling bread, wooden craft, veggie and performances! Please come see their work!

## Subscribe Now!!!

Want to stay up to date with what's going on in Misawa City?  
Get a FREE email subscription to the Misawa City News! Please send your name and email address to:  
[kokusai@city.misawa.lg.jp](mailto:kokusai@city.misawa.lg.jp)

## Misawa City Indoor Heated Pool closure

From Mon 20 through Fri 24 Oct  
For facility maintenance

