

Misawa International Association News

Japanese Beginners' Class

Apr 13, 20, 27, May 11, 18, 25,
Jun 1, 8, 15, 22 Mondays
5:00 pm - 6:00 pm
Fee: ¥3,000 for 10 classes

Sign up is required

Japanese Intermediate Class

Apr 13, 20, 27, May 11, 18, 25,
Jun 1, 8, 15, 22 Mondays
6:00 pm - 7:00 pm
Fee: ¥3,000 for 10 classes

Sign up is required

Survival Japanese

Apr 21, 28, May 12, 19, 26,
Jun 2, 9, 16, 23
Tuesdays
10:00 am - noon
Fee: ¥3,000 for 9 classes

Childcare available ¥900
for all classes! Sign up is required

ABC Circle

Every Wednesday,
10:30 am - 11:30 am

¥500/circle for MIA member
¥800/circle for Non-MIA member

Join our cross-cultural exchange circle.
Make new friends as you learn some Japanese as well
as teach some English.

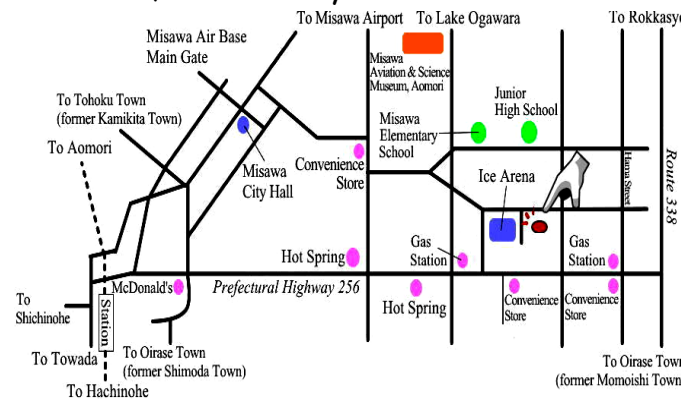
All the classes and events will be held at Misawa
International Center. For more information,
please contact Misawa International Association.

Phone: 080-6022-1349
Email: kokusai@city.misawa.lg.jp



Misawa International Center

TEL:0176-51-1255 FAX:0176-51-1211 Email: kokusai@city.misawa.lg.jp
Address: 230-1 Aza-Sonosawa, Oaza-Misawa, Misawa City 033-0022

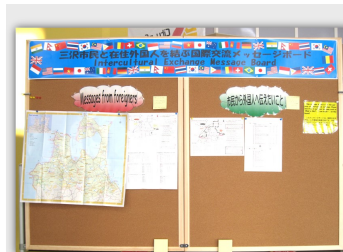


Thank you for reading!!

Misawa City International Relations publishes the monthly free paper,
"Misawa City News". We keep you informed of what is happening in
Misawa.

Subscribe Now!!

Want to stay up to date with what's going on in Misawa City? Get a
FREE email subscription to Misawa City News! Please send your
name and email address to: kokusai@city.misawa.lg.jp



Intercultural Exchange Message Board

Come and see our message board! Located in Misawa International Center Hall,
near the International Exchange Lounge (if you're standing in the entrance way,
the board is off to the left). This message board is for you!

Please post courteous messages or announcements for an intercultural
exchange purpose such as English lessons, play dates for kids, advice in Japanese
life and more. We look forward to your messages!

みさわしていにゅーす

Misawa City News

No.122

April, 2015



The 28th Japan Day Apr 11, Sat

10 am - 4 pm
at the Collocated Club (on Misawa Air Base)

Cherry Blossom and Onsen Festival Apr 29 (Wednesday), 9:30 am - 5 pm at Misawa Citizen's Forestry Park

GPS coordinate: N40.732922, E141.359627

Enjoy the onsen (public spa bath) with a
Karaoke show, Berry dance performance!
Mochi pounding will also be held for you to try.

Towada Spring Festival in Towada Apr 20 - May 5 (Monday to Tuesday) at Kancho-gai Street of Towada City

GPS coordinate: N40.612378, E141.206106

Komakaido is the 100 best streets in Japan.
About 1.1 km long of the street colored pink
with 156 cherry blossoms and 165 fresh green
pine tree enhanced their beauty. After dark, the
street are illuminated.

Ginnan Ryo Spring Festival Apr 18 & 19 (Saturday & Sunday) at Kancho-gai Street of Towada City

GPS coordinate: N40.694715, E141.269514

Ginnan-ryo, social welfare facility that produce
preservative-free hand-made meat product.
There will be free give away!

Misawa Cherry Blossom Festival Apr 29 - May 6 (Wednesday to Wednesday) At the Chuo Park (aka Train park)

GPS coordinate: N40.683239, E141.371273

Come and enjoy the cherry blossom in
Misawa! An Opening event will be held on
Apr 29, Wed (Japanese Holiday) at Chuo
Park (next to the Misawa civic center)
And it's lit up nightly 6:00 pm and 9:00 pm
during the week long event.

Hirosaki Cherry Blossom Festival Apr 23 - May 6 (Thursday to Wednesday) at the Hirosaki Castle Park

GPS coordinate: N40.607456, E140.464384
<http://www.hirosakipark.jp/sakura/>

This location is considered to be the best
cherry blossom viewing site in Tohoku. At the
park, there are about 2,600 cherry trees,
comprised of nearly 50 species. Of the park's
somei-yoshino cherry trees, about 300 of them
are over 100 years old! You can enjoy the
arcades, petal-filled moats and huge picnic
areas. There will also be some rowboats
available to rent. At night, the areas are lit with
lanterns, so the fun will continue during the
evening. Although, the castles' stone walls are
being renovated, and it will take about 10
years, you can still enjoy the nostalgic
atmosphere.

Rokunohe Spring Festival Apr 25, Saturday - May 6 Wednesday at Tateno Park, Rokunohe Town

GPS coordinate: N40.612936, E41.331212

This site has about 1,000 of mountain cherry
blossom trees in park and their beauty will be
fascinate you. There will also be a classic car
event and the chance to catch fish.

Sakura Yabusame in Towada Apr 25 & 26 (Saturday & Sunday) at Central Park of Towada City

GPS coordinate: N40.610352, E141.206793

This event will features Sakura Yabusame, a
traditional horseback archery and Yosakoi
odori, a dance that modern rendition of Kochi
prefecture's summer dance.

Misawa City Indoor Heated Pool Closures Apr 13 - 17 (Monday to Friday)

For facility maintenance



Subscribe Now!!!

Want to stay up to date with
what's going on in Misawa City? Get a FREE
email subscription to the Misawa City News!
Please send your name and email
address to: kokusai@city.misawa.lg.jp

APRIL TIMELINE

4月 Shigatsu : April

Shigatsu is April in Japanese and is also called "Uzuki". It's month of 卯の花 U-no-hana, Deutzia's flower blooms in April.

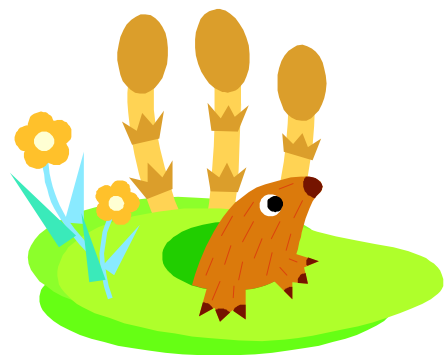
入社式 Nyu-sha shiki:

Company Entrance Ceremony

On April 1, companies throughout Japan hold entrance ceremonies to welcome new employees. Employees wear business suits, dresses or their company's uniforms. A ceremony typically starts with an executive delivering a welcoming speech. Then a representative for the new employees will respond with their commitment to the company. Some of the companies end their ceremonies with company song.

After or sometime before entrance

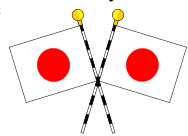
Japanese companies have changed to the western corporate culture, but traditional systems are still followed such as recruiting graduates and extending lifetime employment to company's employees.



昭和の日 Showa no hi: Showa Day

April 29 is the birthday of former Showa Emperor Hirohito, the reigning emperor from 1926 to 1989. This day was called the Emperor's birthday until Emperor Hirohito died on January 7, 1989. After his death, the celebration was kept to honor the emperor and it was named Greenery Day.

In 2007, Greenery day was moved to May 4 and the new celebration "Showa day" was established on April 29.



April
1

March
7

April
29

入学式 Nyu gaku shiki: Entrance Ceremony

April is the beginning of a new academic year for students entering kindergarten to universities and the new fiscal year for businesses and government agencies. Many schools have Nyu-gaku Shiki - an Entrance Ceremony for new students. This ceremony is very important, right along with the Graduation Ceremony.

Where graduation ceremonies are times of sadness, the entrance ceremony is more cheerful and full of hope. Students are dressed in their new uniforms or their best clothes. Parents dress formally: suit and tie for men and mothers sometimes wear kimono.



For parents, the preparation for their child to enter elementary school consists of buying school supplies such as backpack, pencils, notes etc. Most important is when parents buy and pack their child's first "Randoseru". It's a "backpack" made of stitched firm leather or leather-like material. This word of Randoseru is derived from "Ransel" (backpack) in Dutch. January through April, Randoseru is sold at store (includes online) and price starts at ¥10,000 but can go up to as much as ¥100,000.

Despite the price range, all backpacks are designed the same with two shoulder straps, two main compartments with long flap.

Red backpacks for girls and Black for boys were the common colors, but nowadays there are various colors such as "Crayola", pink, light blue, purple, yellow, green.... Most elementary schools allow children to choose their favorite color of Randoseru.

Speaking of colors, yellow caps or hats are required to be worn by first grade, elementary students in most schools. The color yellow is used a lot in children's supplies (hat, umbrella, bag) as a warning sign to protect children going to school.

Please keep your eyes out for those new "yellow-hat wearing" students. Safety first!

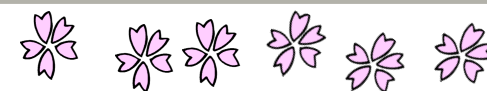


じえんこ ける Jenko keru
I give you money

じえんこ Jen ko: money
ける Ke ru: I give you



Spring for Sakura!



The 桜 sakura—cherry blossom—is Japan's national flower. Almost every school and public facility is surrounded by cherry trees. There are over 600 species in Japan alone. Sakura can vary from the traditional 5-petal flower to having nearly 100 petals, such as the Yae-Sakura. The flower's color can vary—from white to deep pink—as well as form—from upright to willow, such as the Shidare-Sakura. The Japanese prize the ornamental cherry trees but there are several fruit trees too, such as the Yama-Zakura (wild cherry).

Cherry blossoms begin blooming in the south, in Okinawa, and gradually blossom northward, toward Hokkaido. The effect is like a slow cloud of ethereal flowers moving above the land—which is known in Japan as the 桜前線 or sakura-zensen or "the Cherry Blossom Front". This front begins in January and ends about the first week of May. With 58 observation sites nationwide, the Japan Meteorological Agency (JMA), together with the Japanese Weather Association, monitors the sakura-zensen across the nation. Both organizations give updates for the approximate flowering and full-bloom dates of local areas, such as below:

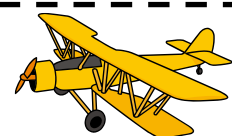
Area	Flowering Date	Full-Bloom Date
Hirosaki Castle Park	Apr 19, Sun	Apr 24, Fri
Aomori-city	Apr 20, Wed	Apr 25, Sat

The JMA defines the flowering date as when a tree has 5 – 6 blossomed flowers and the full-bloom date as when 80% of the tree has blossomed. While the blossoms are in bloom, we have 花見 hanami picnics under the sakura. Hanami means to "to view the flowers" and we take time to enjoy this brief beauty with our family and friends. In the evening, paper lanterns are lit around the trees for Yozakura or "night-time cherry blossom viewing". Yozakura lends itself for a magical evening. For some, it can be romantic and for others, another beer party.

Hanami was first held in the Heian period 平安時代 (ca. 794—1185) among the gentry but by the Edo period 江戸時代 (1603—1868), had become a popular event for all people. During this season, many companies make items decorated with sakura. Food is no exception—sakura shapes & colors as well as being used as ingredients. There is no specific way to enjoy a hanami picnic. All you need are some friends, a picnic mat, and some favorite foods & drinks. (The grocery stores are also full of ideas for picnic foods).

From April 29 - May 6 (Tuesday to Tuesday) at the Chuo Park (next to the Misawa Civic Center), it will lit up nightly between 6 - 9 pm. Also opening event will be held on April 29, Tuesday. Come and enjoy beautiful Sakura!!

Misawa Aviation & Science Museum Event Schedule



Science Show - Let's see extreme cold world!

What happen things at extreme cold temperature? Come and find out at Museum Lab. The show is free but participants still need to pay for the museum entrance fee. No advanced sign up is required, just show up at the lab at the schedule time:

Weekdays: (1) 11:00 am (2) 12:30 pm (3) 3:30 pm Weekends, Holiday: (1) 12:30 pm (2) 3:30 pm

Work Shop - Make a Golf ball top: April 1 - 30 (Sat, Sun and Spring break) at Museum Lab

Making a top with golf ball and let's try who can spin longer! This special holiday weekend event is for first-come, first-served people, and it is limited to 20. Fee is only ¥150 per person including materials. Children must be accompanied by an adult all the time. Please sign up at least 30 minutes prior to the schedules below.

(1) 11:00 - 11:40 am (2) 2:30 - 3:10 pm. (There is no event on 18 and 19 due to the special event)

The 56th Science Technology Week : April 18, Sat - 19, Sun, 9:30 am - 5 pm

During the science technology week, there will be 7 craft workshops in the Special Exhibition Room and Entrance Hall. Try your hand at making a silicone bracelet, shrink plastic keychain, plastic clay, caramelized candy, golf ball top and more. Fee ranging from ¥100 - ¥250.

Movie "the Battle Field VS Ocean": Weekends and Spring break at the AV multimedia Hall

This movie will be play everyday between March 27 - April 6 and weekends only after April 7.

11:00 am - 12:00 pm: Wild life of African Savannah

1:30 pm - 2:15 pm : Whale vs Killer Whale

General Information: Misawa Aviation & Science Museum is open 9:00 am - 5:00 pm, every day except Mondays.

If a Japanese holiday falls on a Monday, then the museum will be open on that Monday but will be closed the following day. Admission: Adult ¥510; High School Student ¥300; Free for 15 years old and under. For more information, check out their website at <http://www.kokukagaku.jp/english.html>

Let's Speak in Nanbu! Part 15

Believe it or not, even though Japan is a small country, it has a variety of colorful accents and dialects. Not far from Misawa—the area from southern Aomori to northern Iwate Prefectures—one of the main dialects is Nanbu-ben (ben 弁 means "dialect; speech-type"). Here are some useful expressions!

